

Ultracompact, single-frequency picosecond OEM laser

- Tunable pulse duration from single pulse to 200 kHz
- Pulse duration from 60 ps to 250 ps
- Integrated trigger-out photodiode for precise timing
- Free-space or fiber coupled output
- Compact footprint for designed for integration

Specifications	VG10 – 1064 nm
Wavelength	1064.4 nm +/- 0.5 nm
Spectral width	< 0.08 nm
Pulse duration, factory fixed (tolerance +/- 20 ps)	60–250 ps
Pulse repetition rate, tunable ¹	single pulse to 200 kHz
Maximum pulse energy ²	up to 0.3 μJ
Average power stability ³ , 12 h (Std. Dev)	< 1 %
Average power stability ³ , 12 h (Std. Dev)	< 2 %
Timing jitter, typical ³	≤ 500 ns
Pulse intensity variation ³	+/- 2 %
M ² value (ISO 11146)	≤ 1.3
Polarization	Linear (1:100)
Optical output	Free-space/ customized fiber coupled version
Trigger-Out signal	Electrical, PD rise time ~300 ps
Warm-up time	< 1 min
Cooling	TEC & conduction cooling
Dimensions	45 x 37 x 25 mm
Warranty	1 year
Laser Operation Parameters	typical 0.8 A, 1.8 V max. 1.1A, 2.5 V
TEC max parameters	2 A, 2 V
Connector	Molex PicoBlade 530471260
Power Supply	not included

¹ Tuning range depends on other laser parameters and may be limited to e.g. 50-150 kHz or single pulse to 10 kHz

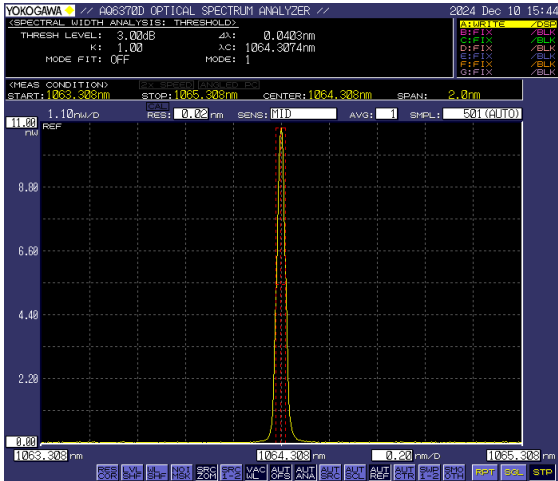
² Maximum pulse energy depends on the pulse repetition rate

³ Typical stability values and may depend on other laser specifications.

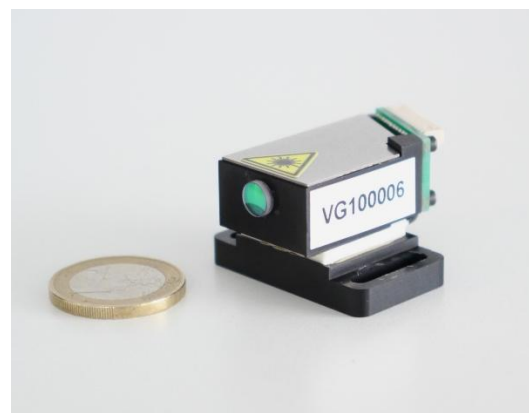
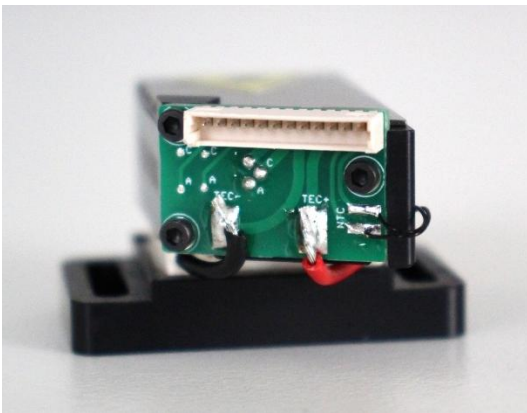
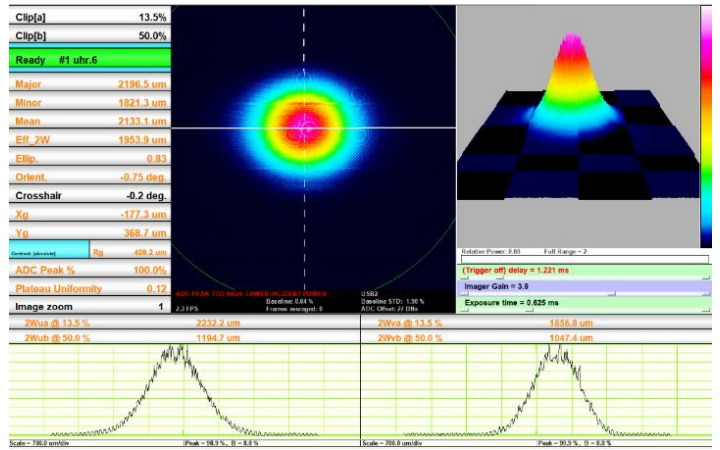
Pulse-to-pulse timing jitter depends on pulse repetition rate. For exact timing, please use trigger out signal.

Picophotonics holds all rights to modify the specifications without prior notice.

Typical Spectral Output (fundamental)



Typical Beam Profile



Safety

Always use protective goggles for 1064 nm and 808 nm.



For more information, contact us at: info@picophotonics.com

¹ Tuning range depends on other laser parameters and may be limited to e.g. 50-150 kHz or single pulse to 10 kHz

² Maximum pulse energy depends on the pulse repetition rate

³ Typical stability values and may depend on other laser specifications.

Pulse-to-pulse timing jitter depends on pulse repetition rate. For exact timing, please use trigger out signal.

Picophotonics holds all rights to modify the specifications without prior notice.